

# Sonofresco Coffee Roaster Bluetooth Installation Instructions

The Sonofresco Bluetooth adaptor enables communication between the coffee roaster control board and the Sonofresco Profile Application. In order to create, modify and monitor custom roast profiles, the following components need to be present:

- Bluetooth compatible control board.
- Bluetooth radio board.
- Bluetooth adaptor cable.
- Sonofresco Profile Application software (Bluetooth enabled).

The following instructions cover installation of the Sonofresco Bluetooth adaptor and the Bluetooth compatible control board.

## Precautions

- PLEASE READ THESE INSTRUCTIONS BEFORE PERFORMING ANY WORK, FAILURE TO DO SO MAY CAUSE DAMAGE TO THE CONTROL BOARD AND IS NOT COVERED BY WARRANTY.
- DISCONNECT APPLIANCE FROM ELECTRICAL POWER SOURCE BEFORE PERFORMING ANY WORK.
- DISCONNECT APPLIANCE FROM GAS SUPPLY BEFORE PERFORMING ANY WORK.

**Failure to follow precautions may result in injury or death.**

### Suggested Tools:

- #2 Phillips screwdriver (Phillips bit mounted in a drill works best).
- 1/4" Nut driver or socket.

# Sonofresco Coffee Roaster Bluetooth Installation Instructions

---

## Warning! Before starting work.

- Turn off gas supply to the appliance
- Disconnect power to the appliance.
- Fully read and understand these instructions.

Remove the chrome top plate and the control board.

Remove six (6) brass screws from chrome top plate using Phillips screwdriver.



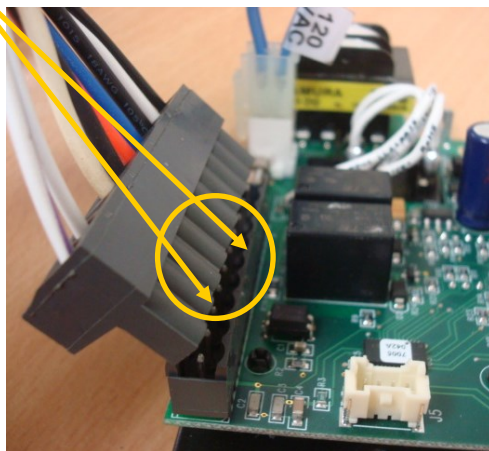
Remove two (2) screws to disconnect the control board.



---

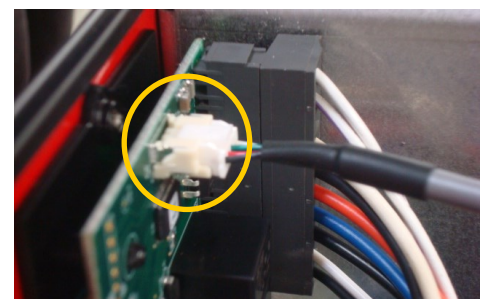
Make note of the electrical connections, specifically the direction of the main wire harness connector to control board position. **Failure to follow procedure will cause damage to the control board.**

Rounded Scallops



Ensure the scallops on connector match to the scallops on the control board (rounded to rounded and squared to squared).

- Plug one end of the Bluetooth harness into the header on the control board.
- Ensure that the connector snaps into place.



(Control Board Viewed From the Top)

Installation is in the reverse order of removal.

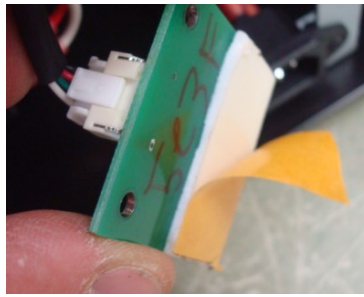
# Sonofresco Coffee Roaster Bluetooth Installation Instructions

Install the Bluetooth radio into a pre 2014 roaster without built in mounting system.

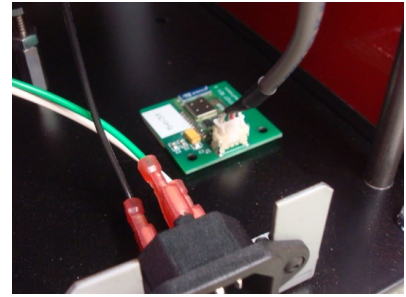
- Disconnect power to the roaster.
- Remove the back panel.



- Plug one end of the Bluetooth harness into the header on the Bluetooth Board.
- Remove the double back tape backing to expose adhesive.

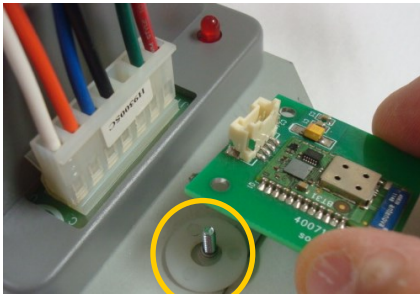


- Find an accessible location on the bottom plate.
- Adhere the radio on the bottom plate.



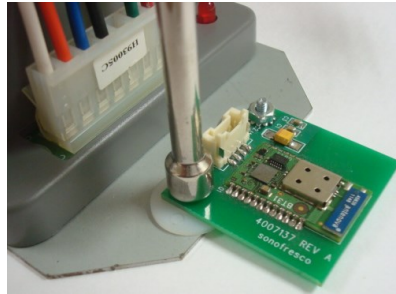
Install the Bluetooth radio into 2014 and later roasters with built in mounting system.

Place one washer on each screw stud and install the Bluetooth radio.

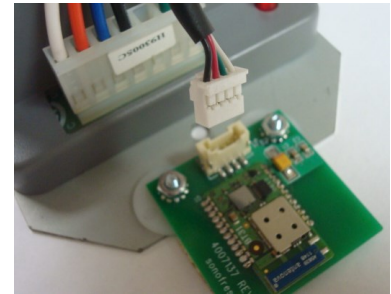


Install and tighten two fasteners.

**DO NOT OVER TIGHTEN**

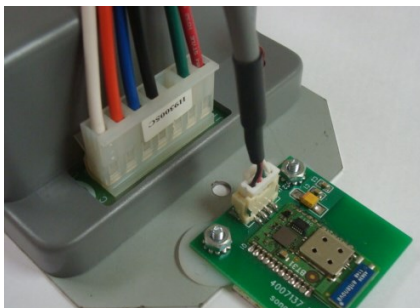


Plug the Bluetooth adaptor cable into the Bluetooth radio.



Washer (2ea)

Completed Bluetooth radio install.



Install the back panel and connect power to the roaster.



Refer to the Sonofresco Profile Application help file for information on using the software and control board to create custom roast profiles.