

STAINLESS STEEL RTD REPLACEMENT INSTRUCTIONS

ONE POUND COFFEE ROASTER

This kit includes a stainless temperature sensor (RTD) specifically designed for 1lb Sonofresco coffee roasters model year 2014 and newer. Please order the 1lb Control Board/Sensor upgrade package 8050029 to upgrade pre 2014 roasters.

Design Enhancements:

- Longer life stainless steel encased sensor.
- Improved Sensor to bracket Mounting
- Stainless Steel casing eases cleaning and maintenance.

The Following instructions will guide you through the removal and replacement of the Sonofresco coffee roaster temperature sensor (RTD). Please note some of the items needed to proceed with the task.

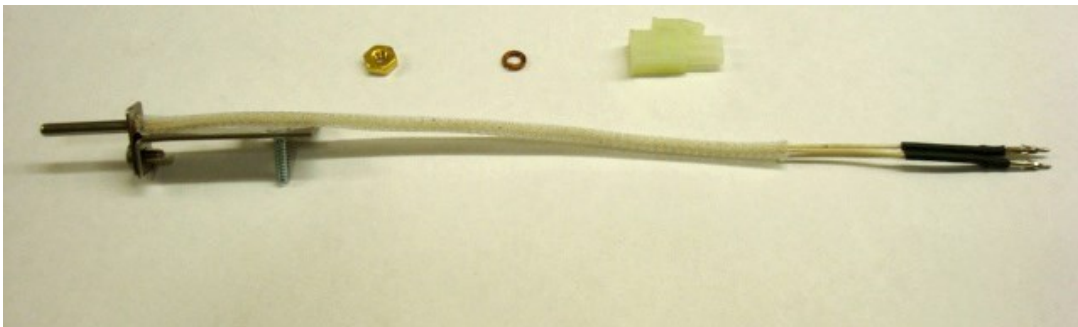
Included Components:

- Temperature sensor w/ bracket
- 6/32 nut
- Spring washer
- Connector

Tools Needed:

- Phillips screwdriver
- 5/16 nut driver or socket
- Wire cutters

Warning: DO NOT install the connector to the RTD until the wires have been inserted through the brass spacer. The connector cannot be removed once it is installed

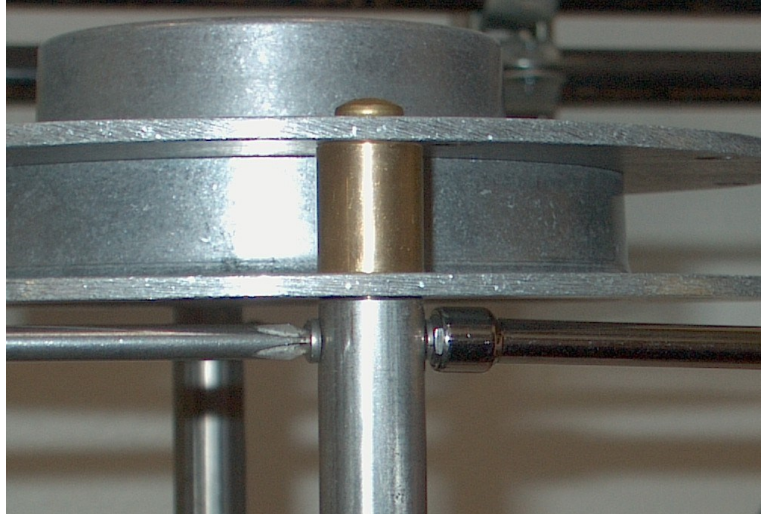


Warning! Before starting work.

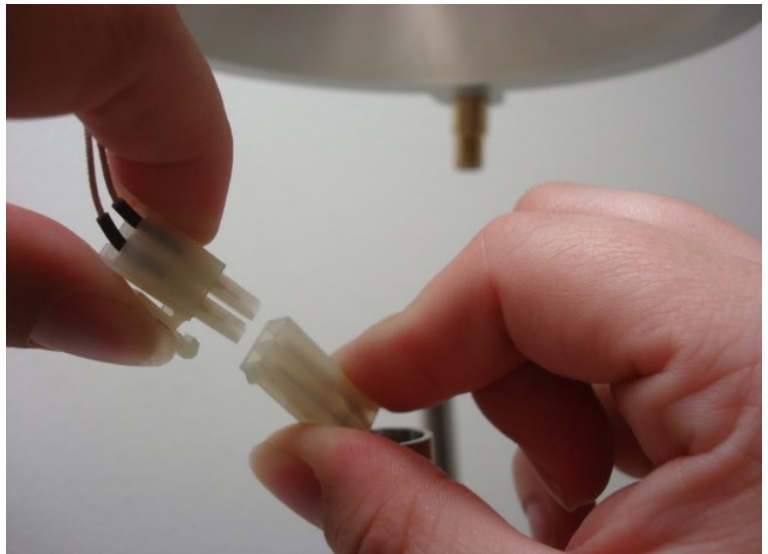
- Turn off gas supply to the appliance
- Disconnect power to the appliance.

STAINLESS STEEL RTD REPLACEMENT INSTRUCTIONS ONE POUND COFFEE ROASTER

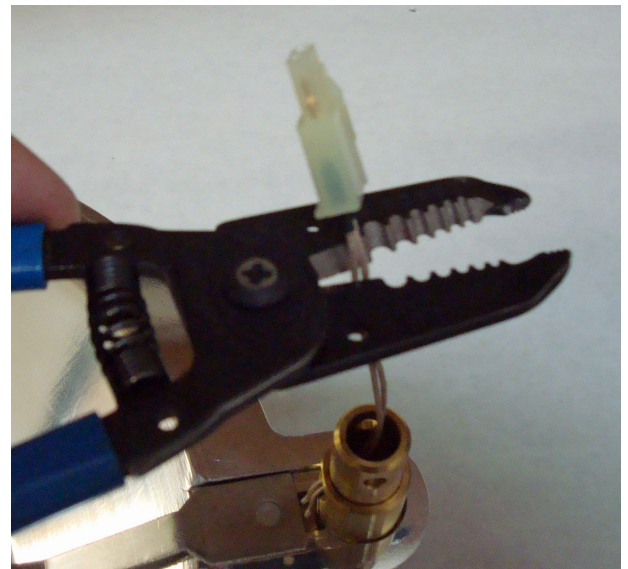
Remove smoke box screws using a #2 Phillips screwdriver and a 5/16" nut



- Lift the smoke box assembly vertically.
- Carefully pull the wires from the stanchion.
- Disconnect old RTD by pressing the connector snap clip and gently pulling the connectors apart.



- Cut the old connector from RTD, this will allow the RTD to be removed from the spacer.
- Once the connector is removed, pull the wires out of the brass spacer.



STAINLESS STEEL RTD REPLACEMENT INSTRUCTIONS ONE POUND COFFEE ROASTER

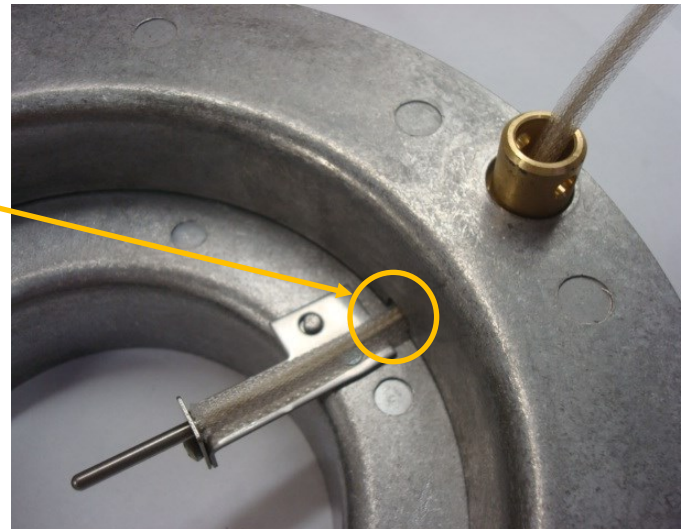
Insert RTD wires into the spacer hole and feed through. Do not force the wire as to allowing pin damage to occur.



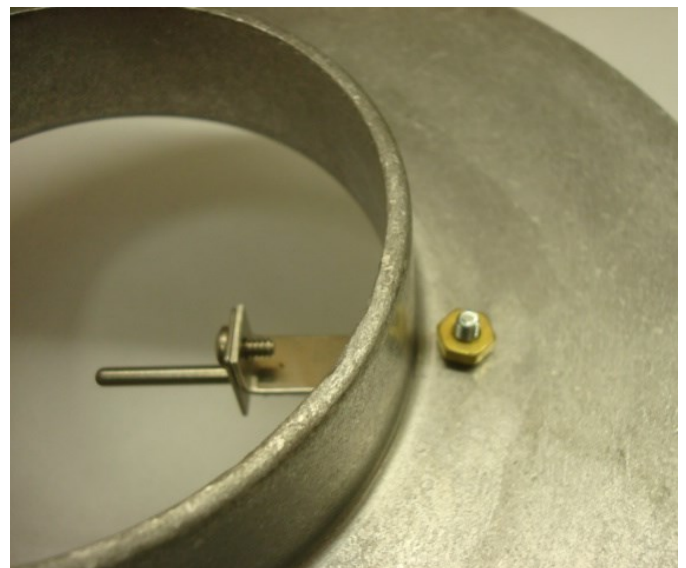
- Ensure that the braided sleeve is passed through the spacer as well as the wires.
- The sensor wires and braided sleeve should pass through the notch in the smoke box bottom as shown.

Note:

Allowing the wires to pinch between the top and bottom smoke box will cause premature failure of the sensor.



Secure the bracket to the smoke box top with the included washer and nut.

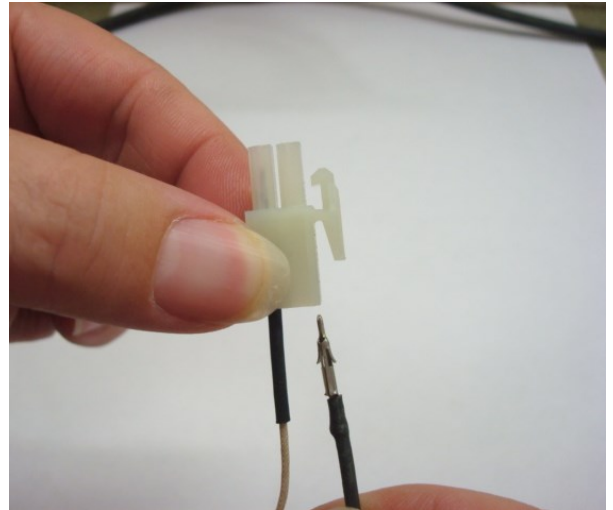


STAINLESS STEEL RTD REPLACEMENT INSTRUCTIONS

ONE POUND COFFEE ROASTER

After the wires are passed through the spacer, insert each pin into the connector until it snaps into place. Ensure that the pins are inserted correctly by gently pulling on each wire.

Note: **The pins should not pull loose.**



- Mate the two connectors and ensure that the snap latch locks in place.
- Slide the connectors down the tube until the holes in the brass spacer align with the holes in the stanchions.
- Reinstall the smoke box screws in reverse order, ensure that the washers are installed and the acorn nuts are tight.



MAINTENANCE

It is important to maintain the coffee roaster on a regular basis to maintain optimal performance of the coffee roaster. Please refer to the Coffee Roaster Owners Manual for a complete guide to proper maintenance.

One of the advantages of the new stainless steel temperature sensor is the robust metal casing and the ability to easily clean the sensor without the risk of damage. It is recommended to apply a mild detergent or degreaser to a piece of Scotchbrite® and gently scrub the sensor casing to remove oil build up. Doing so after every roast will maintain the best performance over the life of the sensor.